



ANDY WARHOL

A la Recherche du Shoe Perdu

c. 1955

offset lithograph on paper hand-colored with watercolor, the cover for the unbound portfolio A La Recherche du Shoe Perdu

20 x 26 1/8 inches (50.8 x 66.4 cm)



ANDY WARHOL

Any one for shoes? (A la Recherche du Shoe Perdu)

c. 1955

offset lithograph on paper hand-colored with watercolor

9 3/4 x 13 3/4 inches (24.8 x 34.9 cm)



ANDY WARHOL

Beauty is shoe, shoe beauty... (A la Recherche du Shoe Perdu)

c. 1955

offset lithograph on paper hand-colored with watercolor

9 3/4 x 13 3/4 inches (24.8 x 34.9 cm)



ANDY WARHOL

Capricorn Sloe Whiskey Fizz

c. 1959

hand-colored blotted ink line drawing and collage on paper

23 3/4 x 18 inches (60.3 x 45.7 cm)



ANDY WARHOL

Chef's Hat ("Who's Who in Holiday Hats")

c. 1958

ink and Dr. Martin's Aniline Dye on Strathmore paper
6 3/4 x 6 7/8 inches (17.1 x 17.5 cm)
Numbered by the Estate of Andy Warhol *TOP 378.003* (on the reverse)



ANDY WARHOL

Cleopatra ("Who's Who in Holiday Hats")

c. 1958

ink and Dr. Martin's Aniline Dye on Strathmore paper
8 1/4 x 5 3/4 inches (21 x 14.6 cm)
Numbered by the Estate of Andy Warhol *TOP 378.011* (on the reverse)



ANDY WARHOL

Couple

c. 1957

ink with color dyes and gold leaf on Strathmore paper
22 x 13 1/2 inches (55.9 x 34.3 cm)
signed *Andy Warhol* (lower center)



ANDY WARHOL

D'Artagnan ("Who's Who in Holiday Hats")

c. 1958

ink and Dr. Martin's Aniline Dye on Strathmore paper
6 1/2 x 8 inches (16.5 x 20.3 cm)
Numbered by the Estate of Andy Warhol *TOP 378.022* (on the reverse)



ANDY WARHOL

Female Head

c. 1958

ink and Dr. Martin's Aniline dye on Strathmore paper
23 x 12 1/8 inches (58.4 x 30.8 cm)
stamped by the Estate of Andy Warhol and the Andy Warhol Foundation for the Visual Arts, Inc., and numbered *295.030* (on the reverse)



ANDY WARHOL

Female Head with Purple Hair

c. 1959

ink and colored ink wash on paper
22 5/6 x 14 1/8 inches (58 x 35.9 cm)
stamped by the Estate of Andy Warhol
and the Andy Warhol Foundation for
the Visual Arts, Inc., and numbered
296.006 (on the reverse)



ANDY WARHOL

Female Portrait

c. 1955

black ballpoint pen and ink on manila
paper
16 3/4 x 13 7/8 inches (42.5 x 35.2 cm)



ANDY WARHOL

Fez ("Who's Who in Holiday Hats")

c. 1958

ink and Dr. Martin's Aniline Dye on
Strathmore paper
5 3/8 x 4 7/8 inches (13.7 x 12.4 cm)
Numbered by the Estate of Andy
Warhol TOP 378.013 (on the reverse)



ANDY WARHOL

Flowers

1978

silkscreen ink on paper
45 x 35 inches (114.3 x 88.9 cm)
stamped Andy Warhol Enterprises, Inc. 1978
(upper left)



ANDY WARHOL

George Washington ("Who's Who in
Holiday Hats")

c. 1958

ink and Dr. Martin's Aniline Dye on
Strathmore paper
5 x 8 3/8 inches (12.7 x 21.3 cm)
Numbered by the Estate of Andy
Warhol TOP 378.019 (on the reverse)

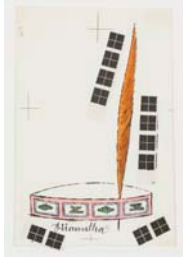


ANDY WARHOL

Gold Shoe (Read Miles)

c. 1950

gold leaf collage and ink on paper
13 7/8 x 18 3/4 inches (35.2 x 47.6 cm)
signed and titled *Andy Warhol Read Miles*
stamped by the Andy Warhol Art
Authentication Board, Inc. and
numbered *A119.0310* (on the reverse)



ANDY WARHOL

Hiawatha ("Who's Who in Holiday Hats")

c. 1958

ink and Dr. Martin's Aniline Dye on
Strathmore paper
7 7/8 x 5 1/8 inches (20 x 13 cm)
Numbered by the Estate of Andy
Warhol *TOP 378.001* (on the reverse)



ANDY WARHOL

I dream of Jeannie with the light brown shoes. (A la Recherche du Shoe Perdu)

c. 1955

offset lithograph on paper hand-colored
with watercolor
9 3/4 x 13 3/4 inches (24.8 x 34.9 cm)



ANDY WARHOL

Ice Cream Cone

c. 1959

blotted ink and Dr. Martin's aniline dye
on paper
28 7/8 x 23 inches (73.3 x 58.4 cm)



ANDY WARHOL

In her sweet little alice blue shoes. (A la Recherche du Shoe Perdu)

c. 1955

offset lithograph on paper hand-colored
with watercolor
9 3/4 x 13 3/4 inches (24.8 x 34.9 cm)



ANDY WARHOL

King's Crown ("Who's Who in Holiday Hats")

c. 1958

ink and Dr. Martin's Aniline Dye on Strathmore paper
6 1/2 x 5 3/8 inches (16.5 x 13.7 cm)
Numbered by the Estate of Andy Warhol TOP 378.006 (on the reverse)



ANDY WARHOL

Large shoe with stocking (A la Recherche du Shoe Perdu)

c. 1955

offset lithograph on paper hand-colored with watercolor
26 1/8 x 20 inches (66.4 x 50.8 cm)



ANDY WARHOL

Little Bow-Peep ("Who's Who in Holiday Hats")

c. 1958

ink and Dr. Martin's Aniline Dye on Strathmore paper
3 3/8 x 6 3/8 inches (8.6 x 16.2 cm)
Numbered by the Estate of Andy Warhol TOP 378.007 (on the reverse)



ANDY WARHOL

Little Miss Sunshine ("Who's Who in Holiday Hats")

c. 1958

ink and Dr. Martin's Aniline Dye on Strathmore paper
6 1/2 x 7 3/8 inches (16.5 x 18.7 cm)



ANDY WARHOL

Mao

1973

graphite on paper
40 x 30 inches (101.6 x 76.2 cm)
signed, initialed, and dated twice *Andy Warhol 1973 AW 73*; stamped with the Estate of Andy Warhol and the Andy Warhol Foundation for the Visual Arts stamps; numbered 43.002 (all on the reverse)



ANDY WARHOL

Marshal Dillon ("Who's Who in Holiday Hats")

c. 1958

ink and Dr. Martin's Aniline Dye on
Strathmore paper
5 1/4 x 6 3/4 inches (13.3 x 17.1 cm)
Numbered by the Estate of Andy
Warhol *TOP 378.014* (on the reverse)



ANDY WARHOL

Mary Christmas ("Who's Who in Holiday Hats")

c. 1958

ink and Dr. Martin's Aniline Dye on
Strathmore paper
6 3/8 x 6 3/4 inches (16.2 x 17.1 cm)
Numbered by the Estate of Andy
Warhol *TOP 378.002* (on the reverse)

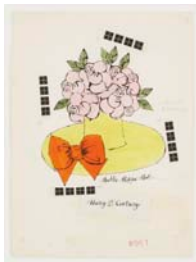


ANDY WARHOL

Mary Poppins ("Who's Who in Holiday Hats")

c. 1958

ink and Dr. Martin's Aniline Dye on
Strathmore paper
6 3/4 x 8 1/4 inches (17.1 x 21 cm)
Numbered by the Estate of Andy
Warhol *TOP 378.021* (on the reverse)



ANDY WARHOL

Mary Q. Contrary ("Who's Who in Holiday Hats")

c. 1958

ink and Dr. Martin's Aniline Dye on
Strathmore paper
15 x 11 inches (38.1 x 27.9 cm)
Numbered by the Estate of Andy
Warhol *TOP 378.029* (on the reverse)



ANDY WARHOL

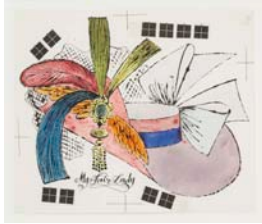
Miss Muffet ("Who's Who in Holiday Hats")

c. 1958

ink and Dr. Martin's Aniline Dye on Strathmore paper

5 1/4 x 6 3/4 inches (13.3 x 17.1 cm)

Numbered by the Estate of Andy Warhol *TOP 378.010* (on the reverse)



ANDY WARHOL

My Fair Lady ("Who's Who in Holiday Hats")

c. 1958

ink and Dr. Martin's Aniline Dye on Strathmore paper

7 1/2 x 8 3/4 inches (19.1 x 22.2 cm)

Numbered by the Estate of Andy Warhol *TOP 378.017* (on the reverse)



ANDY WARHOL

Napoleon B. ("Who's Who in Holiday Hats")

c. 1958

ink and Dr. Martin's Aniline Dye on Strathmore paper

4 1/8 x 9 3/8 inches (10.5 x 23.8 cm)

Numbered by the Estate of Andy Warhol *TOP 378.018* (on the reverse)



ANDY WARHOL

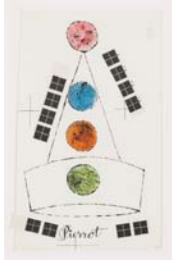
Pied Piper ("Who's Who in Holiday Hats")

c. 1958

ink and Dr. Martin's Aniline Dye on Strathmore paper

8 x 5 3/4 inches (20.3 x 14.6 cm)

Numbered by the Estate of Andy Warhol *TOP 378.026* (on the reverse)



ANDY WARHOL

Pierrot ("Who's Who in Holiday Hats")

c. 1958

ink and Dr. Martin's Aniline Dye on
Strathmore paper
8 7/8 x 5 1/4 inches (22.5 x 13.3 cm)
Numbered by the Estate of Andy
Warhol TOP 378.027 (on the reverse)



ANDY WARHOL

Pirate Hat ("Who's Who in Holiday Hats")

c. 1958

ink and Dr. Martin's Aniline Dye on
Strathmore paper
5 1/2 x 8 1/2 inches (14 x 21.6 cm)
Numbered by the Estate of Andy
Warhol TOP 378.016 (on the reverse)



ANDY WARHOL

Profile of a Roman Head

c. 1957

gold leaf and ink on paper
20 x 14 inches (50.8 x 35.6 cm)
stamped by The Andy Warhol Art
Authentication Board, Inc. and
numbered A112.046 (on the reverse)



ANDY WARHOL

Queen of Hearts ("Who's Who in Holiday Hats")

c. 1958

ink and Dr. Martin's Aniline Dye on
Strathmore paper
4 1/2 x 5 3/8 inches (11.4 x 13.7 cm)
Numbered by the Estate of Andy
Warhol TOP 378.009 (on the reverse)



ANDY WARHOL

Robin Hood ("Who's Who in Holiday Hats")

c. 1958

ink and Dr. Martin's Aniline Dye on
Strathmore paper
9 1/2 x 6 inches (24.1 x 15.2 cm)
Numbered by the Estate of Andy
Warhol TOP 378.025 (on the reverse)



ANDY WARHOL

Scarlett O'Hara ("Who's Who in Holiday Hats")

c. 1958

ink and Dr. Martin's Aniline Dye on Strathmore paper
9 1/4 x 8 1/2 inches (23.5 x 21.6 cm)
Numbered by the Estate of Andy Warhol *TOP 378.015* (on the reverse)



ANDY WARHOL

See a shoe and Pick it up and all day long you'll have Good Luck (A la Recherche du Shoe Perdu)

c. 1955

offset lithograph on paper hand-colored with watercolor
9 3/4 x 13 3/4 inches (24.8 x 34.9 cm)



ANDY WARHOL

Self-Portrait

1967

silkscreen on paper
25.51 x 21.26 inches (64.8 x 54 cm)
signed *Andy Warhol* (lower right)
The Andy Warhol Foundation for the Visual Arts No. A149.089



ANDY WARHOL

Shoe bright, shoe light, first shoe ive seen tonight (A la Recherche du Shoe Perdu)

1955

offset lithograph on paper hand-colored with watercolor
9 3/4 x 13 3/4 inches (24.8 x 34.9 cm)



ANDY WARHOL

Shoe bright, shoe light, first shoe ive seen tonight (A la Recherche du Shoe Perdu)

c. 1955

offset lithograph on paper hand-colored with watercolor
9 3/4 x 13 3/4 inches (24.8 x 34.9 cm)



ANDY WARHOL

shoe fly Baby (A la Recherche du Shoe Perdu)

c. 1955

offset lithograph on paper hand-colored with watercolor

9 3/4 x 13 3/4 inches (24.8 x 34.9 cm)



ANDY WARHOL

shoe fly Baby (A la Recherche du Shoe Perdu)

c. 1955

offset lithograph on paper hand-colored with watercolor

9 3/4 x 13 3/4 inches (24.8 x 34.9 cm)



ANDY WARHOL

Shoe of the evening, beautiful shoe. (A la Recherche du Shoe Perdu)

c. 1955

offset lithograph on paper hand-colored with watercolor

9 3/4 x 13 3/4 inches (24.8 x 34.9 cm)



ANDY WARHOL

Snow White ("Who's Who in Holiday Hats")

c. 1958

ink and Dr. Martin's Aniline Dye on Strathmore paper

3 1/2 x 6 inches (8.9 x 15.2 cm)

Numbered by the Estate of Andy Warhol TOP 378.012 (on the reverse)



ANDY WARHOL

Sunset and evening shoe (A la Recherche du Shoe Perdu)

c. 1955

offset lithograph on paper hand-colored with watercolor

9 3/4 x 13 3/4 inches (24.8 x 34.9 cm)



ANDY WARHOL

The Night the Roxy Opened

1961

watercolor, blotted ink, and gold paper elements on paper

17 3/4 x 25 1/8 inches (45.1 x 63.8 cm)



ANDY WARHOL

There is Magic in All Things

c. 1959

hand-colored blotted ink line drawing
on paper

23 3/4 x 18 inches (60.3 x 45.7 cm)



ANDY WARHOL

Tin Soldier ("Who's Who in Holiday Hats")

c. 1958

ink and Dr. Martin's Aniline Dye on
Strathmore paper

8 3/4 x 6 1/8 inches (22.2 x 15.6 cm)

Numbered by the Estate of Andy
Warhol TOP 378.008 (on the reverse)



ANDY WARHOL

Toreador ("Who's Who in Holiday Hats")

c. 1958

ink and Dr. Martin's Aniline Dye on
Strathmore paper

4 3/4 x 7 inches (12.1 x 17.8 cm)

Numbered by the Estate of Andy
Warhol TOP 378.005 (on the reverse)



ANDY WARHOL

Uncle Sam wants Shoe! (A la Recherche du Shoe Perdu)

c. 1955

offset lithograph on paper hand-colored
with watercolor

9 3/4 x 13 3/4 inches (24.8 x 34.9 cm)



ANDY WARHOL

Welch's Grape Juice

1985-1986

acrylic on HMP paper

31 1/2 x 23 1/2 inches (80 x 59.7 cm)

stamped by the Estate of Andy Warhol
and the Andy Warhol Foundation for
the Visual Arts, Inc., and numbered
91.046 (on the reverse)



ANDY WARHOL

Witch Hat ("Who's Who in Holiday Hats")

c. 1958

ink and Dr. Martin's Aniline Dye on
Strathmore paper

8 1/4 x 8 3/4 inches (21 x 22.2 cm)

Numbered by the Estate of Andy
Warhol *TOP 378.023* (on the reverse)



ANDY WARHOL

Woman with Roses and Cupids

c. 1956

hand-colored blotted ink line drawing
on paper

28 x 22 1/2 inches (71.1 x 57.2 cm)