

# Yves Klein: A Career Survey

## Room List

### Come with Me into the Void

When I think of you  
The same dream always returns  
We walk arm in arm  
Along the wild road of our vacation  
And then, little by little,  
Everything seems to disappear around us  
The trees, the flowers, the sea  
At the edge of the road,  
There is suddenly no longer anything at all  
We are at the end of our world  
Well... Are we going to go back?  
No... I know that you say no  
Come with me into the void!  
If you come back one day  
You who dream also  
Of this marvelous void  
Of this absolute love  
I know that together,  
Without saying a word,  
We will leap  
Into the reality of that void  
Which waits for our love,  
Like me who waits for you each day:  
Come with me into the void!

Yves Klein, 1957

First floor,  
front room,  
clockwise



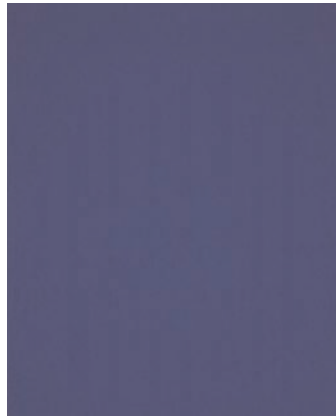
**Blue Sponge Sculpture, Untitled (SE 194)**

1959

pure pigment with synthetic resin, natural sponge,  
metal rod and stone

height: 15 1/4 inches

*Private collection*



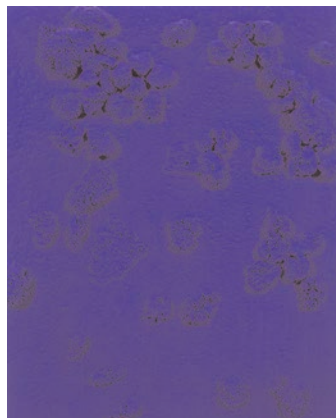
**Blue Monochrome, Untitled (IKB 164)**

1923

pure pigment with synthetic resin on gauze  
mounted on wood

35 1/4 x 19 5/16 inches

*Private collection*



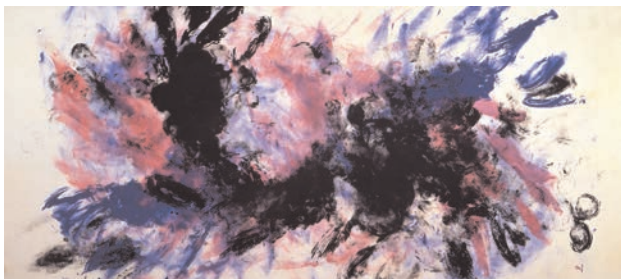
**Blue Sponge Relief, Untitled (RE 30)**

1957

pure pigment with synthetic resin, natural sponges  
and pebbles on board

19 x 11 1/16 inches

*Private collection*



**Anthropometry, Untitled (ANT 68)**

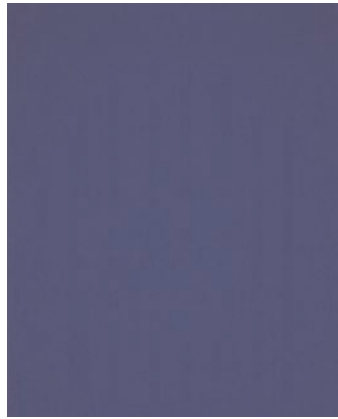
c1921

pure pigment with synthetic resin on paper laid  
down on canvas

21 x 11 1/5 inches

*Private collection*

irv floor,  
front room,  
clockiē,  
cont7



**Blue Monochrome, Untitled (IKB 83)**

1960

pure pigment ūh ūnthetic reŭn on gū ē  
mounted on ōod

36 17 78 37 inche7

*Private collection*

irv floor,  
ak room,  
clockiē



**Blue Monochrome, Untitled (IKB 186)**

1960

pure pigment ūh ūnthetic reŭn on gū ē  
mounted on ōod

18 79 inche7

*ollection o ir inia an*



**Anthropometry, Untitled (ANT 7)**

c1960

pure pigment ūh ūnthetic r eŭn on pŕ er  
40 18 78 37 inche7

*Private collection*



**Anthropometry, Untitled (ANT 134)**

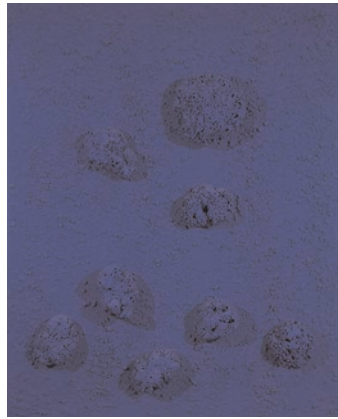
196

pure pigment ūh ūnthetic reŭn on pŕ er lā d  
doŭn on cā ā

4 38 70 inche7

*Private collection*

*irt loor  
ac roo  
clocie  
cont*



**Siii (RE 46)**

*ure i ent it h n thetic rein natural on e  
an ele on oar*

*inche*

**Priãte collection**



**Pink Monochrome, Untitled (MP 19)**

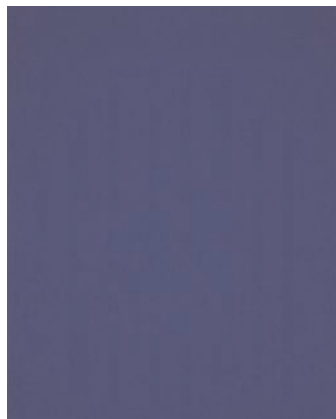
*c*

*ure i ent it h n thetic rein on canva*

*ounte on o o*

*inche*

**Priãte collection**



**Blue Monochrome, Untitled (IKB 67)**

*ure i ent it h n thetic rein on au e*

*ounte on o o*

*inche*

**Priãte collection**



**Monogold, Untitled (MG 8)**

*ol lea on o o*

*inche*

**Priãte collection**

*irt loor  
ac roo  
clocie  
cont*



### **Blue Sponge Relief, Untitled (RE 4)**

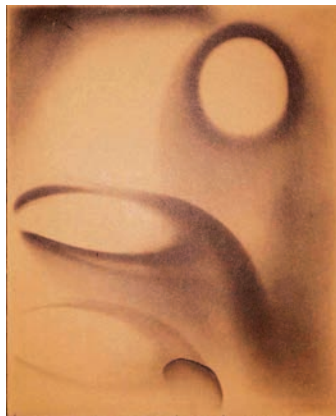
*c  
ure i ent it h n thetic rein natural on e  
an ele on oar  
inche  
Priāte collection*

*econ loor  
rotuna  
clocie*



### **Fire Painting, Untitled (F 113)**

*urnt car oar  
inche  
2 ollection of 0 irginia 3 ān*



### **Fire Painting, Untitled (F 98)**

*urnt car oar ounte on o o  
inche  
Priāte collection, āērland*



### **White Planetary Relief, Untitled (RP 12)**

*c  
ure i ent an an uneter ine iative on  
later on o o  
inche  
Priāte collection*

*econ loor  
rotuna  
clocie  
cont*



### **Blue Planetary Relief, Untitled (RP 16)**

*ure i ent ith n thetic rein on oar  
inche*

**Priãte collection**



### **Lune 66 (RP 21)**

*ure i ent an an uneter ine iative on  
later on o o*

*inche*

**Priãte collection**



### **Video Footage 1**

*onochro e un euer  
van utler*

*ueu au an e  
anuar eruar*

*ve lein Prooitio n onochro e  
alerie o lette A len*

*a*

*inute eco n*

*ve lein Prooitio n onochro e  
alerie ri l ert*

*a*

*inute*

**A throo trie e lou e leue  
alerie internationale art conte orain  
arch**

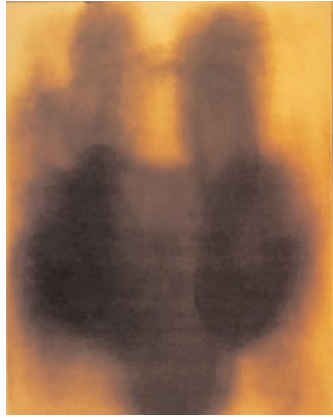
*inute eco n*

*ve lein o rin on the ire Paintin  
en tre ea i e a e rance*

*inute*



econ loor  
ront roo  
cloci e



**Fire Painting, Untitled (FK 6)**

urnt car oar  
inche  
**Priate collection**



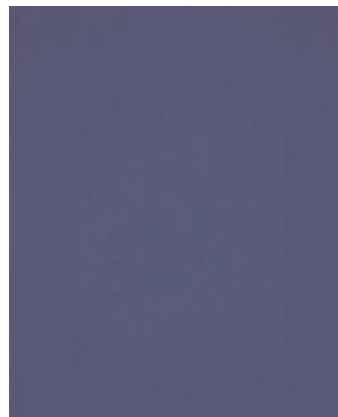
**California (FKB 69)**

ure i ent ith n thetic rein on au e  
ounte on oar  
inche  
**Priate collection**



**Fire Color Painting, Untitled (FC 28)**

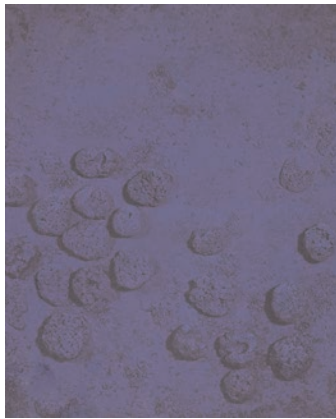
ure i ent ith n thetic rein on urnt car  
oar ounte on o o  
inche  
r7and r7 ric Be erdorf



**Blue Monochrome, Untitled (FKB 272)**

ure i ent it h n thetic rein on au e  
ounte on o o  
inche  
**Priate collection**

*econ loor  
ront roo  
clocie  
cont*



### **DoDoDo (RE 16)**

*ure i ent ith n thetic rein natural on e  
an ele on oar*

*inche*

**Priate collection**



### **Monogold, Untitled (MG 31)**

*ol lea on o o*

*inche*

**2 ollection of 0 irginia 3 an**



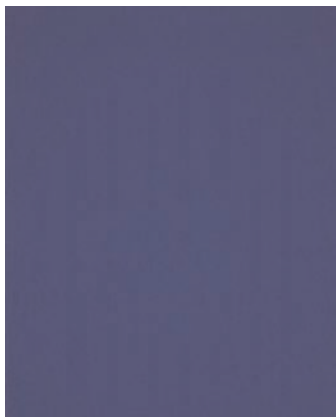
### **Pink Monochrome, Untitled (MP 21)**

*ure i ent it h n thetic rein on canva*

*ounte on o o*

*inche*

**2 ollection of 0 irginia 3 an**



### **Blue Monochrome, Untitled**

*ure i ent ith n thetic rein on au e*

*ounte on o o*

*inche*

**2 ollection of 0 irginia 3 an**



*econ loor  
ront roo  
center  
clocie  
cont*



### **Blue Sponge Sculpture, Untitled (SE 251)**

*ure i ent it h n thetic rein natural on e  
ro an to ne  
inche  
an rancižo užu of odern rt,  
Bežež of P lliž atti7*

*econ loor  
ac roo  
clocie*



### **Anthropometry, Untitled (ANT 1596)**

*ure i ent ith n thetic rein on aer lai  
o n on canva  
inche  
Prižate collection*



### **Blue Sponge Relief, Untitled (RE 21)**

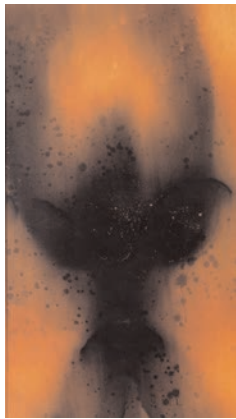
*ure i ent it h n thetic rein natural on e  
an ele on oar  
inche  
Prižate collection*



### **Blue Sponge Relief, Untitled (RE 29)**

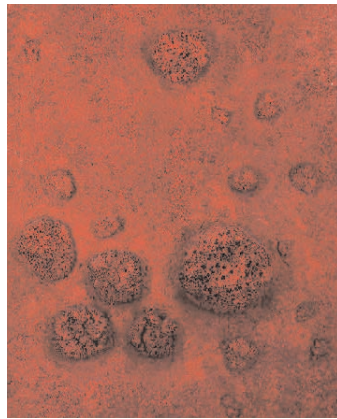
*ur e i ent ith n thetic r ein natural on e  
an ele on oar  
inche  
Prižate collection, t erton, 2 alifornia*

*econ loor  
ac roo  
cloci e  
cont*



**Fire Painting, Untitled (F 1)**

*urnt car oar  
inche  
Priate collection*



**Pink Sponge Relief, Untitled (RE 26)**

*ure i ent ith n thetic rein natural on e  
an ele on oar  
inche  
Priate collection*